



1 Blackthorn Meadows

, Hartlepool, TS27 3DG

£349,950



Igomove take tremendous pleasure in presenting this stylish four double bed roomed detached residence located on a modern development, it offers a host of key desirable elements such as; four immaculate double bedrooms (all with fitted wardrobes and master with en suite facilities and extensive fitted wardrobes to dressing area), pristine family bathroom, inviting entrance hallway, beautiful lounge, stunning open concept kitchen/diner/family room, useful utility room, guest cloak room, lawned gardens (rear is West facing), extensive four vehicle driveway, integral garage, UPVC double glazing, gas central heating, impeccable decor throughout, freehold.



Attractive modern facade impeccably presented, lawned garden, driveway for four cars to integral garage, front door with canopy over into;

Entrance hallway with turned staircase to the first floor accommodation and also with fitted storage cupboard, pristine decor, recessed spotlights, karndean flooring.

Stylish lounge located to the front of the property with impeccable decor.

Impressive open concept kitchen/diner/family room which comprises a wealth of contemporary wall, drawer, larder, and base cabinetry, complementary silestone surfaces, kickboard lighting, under cabinet lighting, enviable breakfasting central Island, integrated oven, integrated ceramic hob, integrated stainless extractor, integrated microwave, integrated fridge freezer, integrated wine cooler, one and a half bowl inset sink with mixer tap, karndean flooring, recessed spotlights, ample space to both dine and relax to the dining and snug areas, French doors flanked by full height windows which lead to the rear garden.

Useful utility room with inset sink, chrome mixer tap, silestone work surface, sleek cabinetry, integrated washing machine, karndean flooring, half glazed rear access door.

Excellent guest cloak room comprising concealed cistern WC, pedestal wash basin, complimentary half wall tiling, karndean flooring.

To the large first floor galleried landing there is a front elevation window providing an abundance of natural light plus there is a fitted storage cupboard and loft access.

Master double bedroom suite with window to the front elevation, impeccable decor, extensive fitted walk in wardrobe/ dressing area and also with access to;

Large ensuite shower room comprising oversized shower enclosure, concealed cistern WC and wall mounted wash basin, with beautiful complimentary tiling to walls and floor, feature mirror, recessed spotlights.

Bedroom two is a sizable double situated to the rear with fitted wardrobes, immaculate decor.

Bedroom three is a further rear aspect double with fitted wardrobes, fantastic decor.

Bedroom four is located to the front of the property, pristine decor.

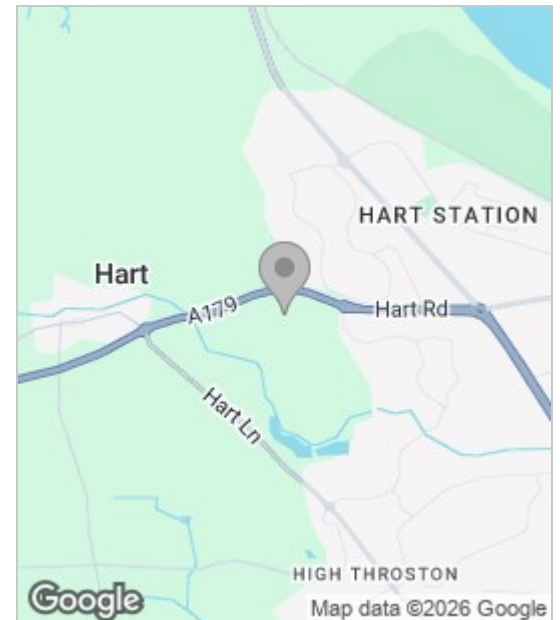
The immaculate family bathroom comprises bath, over bath shower, glass shower screen, concealed cistern WC and wall mounted wash basin with stylish tiling to walls and floor, feature mirror, chrome heated towel radiator.

Fully boarded loft space.

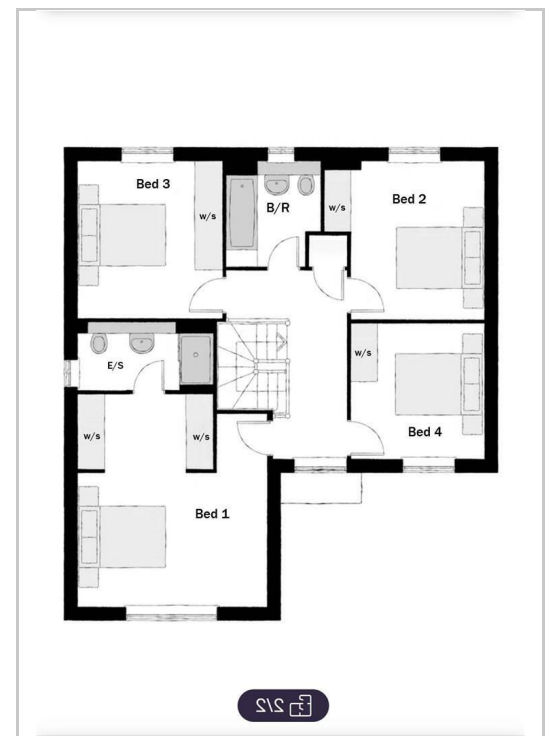
To the rear of the property is an enclosed good size WEST FACING garden laid to lawn with patio areas.

This impressive residence fully deserves internal inspection and Igomove eagerly await your instructions to view.

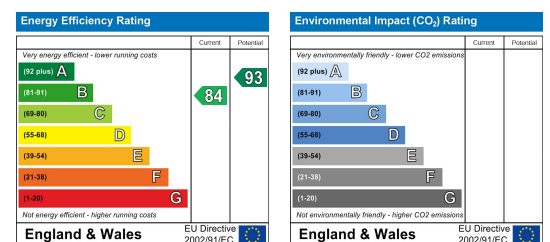
Area Map



Floor Plan



Energy Efficiency Graph



These particulars, whilst believed to be accurate are set out as a general outline only for guidance and do not constitute any part of an offer or contract. Intending purchasers should not rely on them as statements of representation of fact, but must satisfy themselves by inspection or otherwise as to their accuracy. No person in this firm's employment has the authority to make or give any representation or warranty in respect of the property.